

Views from the

# FIGGE

ART MUSEUM

Fall/Winter Issue 48





# In this Issue

- 3 From the Director**
- 4 Digital Artwork and the Test of Time**  
*Message from Our Planet:*  
*Digital Art from the Thoma Collection*
- 8 Peace, Power, and Prestige: Metal Arts in Africa**
- 9 Caroline Kent: An Improvisation of Form**
- 10 Erwin Eisch, Mauricio Lasansky, and Zoya Cherkassay: Artists Remember**
- 10 Out of Darkness**
- 11 Employee Spotlight: Q&A with Tony Trout**
- 12 New Acquisition: Larassa Kabel, *Spirit House***
- 14 Calendar of Events**
- 18 Education Highlights**
- 19 Tours**
- 19 Art Academy at the Figge**
- 20 Q&A with Alice Walton**
- 22 Caught on Camera**
- 24 Membership: Area College Students Belong at the Figge!**
- 26 Facility Rental**
- 27 Museum Store**

## News from the Figge Fall/Winter Issue 48

Published throughout the year at no charge for members, friends, and people interested in the museum.

Home of the  City of Davenport art collection.



Grand Lobby at the Figge Art Museum

### THE CURRENT *Iowa*

The Current Iowa Hotel is the exclusive hospitality sponsor of the Figge Art Museum

### Hours

See website to confirm hours.

10 a.m.-5 p.m. Tuesday, Wednesday,

Friday, Saturday

10 a.m.-8 p.m. Thursday

Noon-5 p.m. Sunday

Facility rentals 563.345.6657

Wheelchairs available

ASL interpreters upon request

### Admission

\$10 adults; \$6 seniors and students with ID;  
\$4 children ages 4-12; children under age 4 free  
AAA members save \$2

### Free admission

Thursday evenings from 5-8 p.m.

Seniors first Thursday of the month

Active U.S. Armed Forces and their families

### Executive Committee

Don Doucette Ph.D., *President*

Ken Koupal, *Immediate Past President*

Aleeza Singh, *Vice President*

Samuel Skorepa, *Secretary*

Lee Gaston, *Treasurer*

Carolyn Martin, *At Large*

Tom Terronez, *At Large*

### Board Members

John Anderson

Mo Hyder

Julianne Brown, Ph.D.

Mary Lou Kotecki

Jonathan Burnett

Marion Meginnis

Kyle Carter

Wynne Schafer

Nancy Danico

Tracy Schwind

Dr. Joseph D'Souza, DDS

Annika Tunberg

Denise Garrett

Dana Wilkinson



Culture matters here.



IOWA DEPARTMENT OF  
CULTURAL AFFAIRS

IOWA ARTS COUNCIL  
IOWA DEPARTMENT OF CULTURAL AFFAIRS

NATIONAL ENDOWMENT FOR THE ARTS

EXHIBITS PRODUCE CULTURE SOCIETY OF IOWA

COVER: Jason Salavon, (*Color*) *Wheel*, 2012, inkjet print on paper, © Jason Salavon, photo by Kim Richardson

# From the Director



No matter how old I get, fall always brings back memories of returning to school and all associated with it, including new beginnings, fresh experiences, and the excitement over connecting with old and new friends. While most of us are not returning to classes this fall, I'm happy to report that all of the above is happening at the Figge, as we move into this next season.

If you haven't had a chance to walk through our permanent collection galleries lately, you're in for a treat! With the departure of the University of Iowa's collection, we had an opportunity to form new partnerships and display more of our own collection. Thirteen works from the Jocelyn Art Museum are on view in the Avenue Gallery thanks to a collaboration with the Art Bridges Foundation and are thoughtfully paired with the Figge's works. Indigenous / Mexican-American artist Tlisza Jaurique has created a thought provoking and powerful decolonial installation in the Mexican Vice Regal gallery, and eleven 19th- and early 20th-century paintings from the Warner Foundation highlight aspects of American history through art.

These installations complement the four new temporary exhibitions we'll be opening over the next few weeks, which comprise an extraordinary range of media, culture, and subject matter. This fall, our visitors will be able to experience prints by Ewrin Eisch, Mauricio Lasansky, and Zoya Cherkassay that address Nazi-era oppression and genocide; metalwork from Africa; software, video, and light technology artworks; and the paintings, site specific interventions, and sculptures of Chicago-based artist Caroline Kent.

As many of you know, the Figge recently joined forces with local art legend Pat Bereskin, and she and her team of art instructors are partnering with ours to offer over 60 classes this fall in the Figge studios! In addition to her famed Art Academy for students, a wide range of classes for all ages, including oil painting, watercolor painting, beginning drawing, clay for kids, as well as our ever-popular Happy Little Trees and Wine and Art, will be taking place. There is truly something for everyone!

We've also re-envisioned our beloved Art Off the Wall. This year, the cocktail party and auction, on September 23, has been renamed *Off the Wall: Art, Antiques, & Collectibles*. Featuring nearly 100 exceptional art pieces for all tastes and interests by well-known local, national, and international artists, this event offers you a chance to add works in all different mediums to your collection while supporting the Figge's mission!

Just like the leaves falling from the trees, the Figge's galleries are also transforming. I invite you to stroll the galleries, participate in a class or program, shop the Museum Store, or find solace this fall at the Figge.

*Michelle Hargrave, Executive Director and CEO*

# Digital Artwork and the Test of Time

**“Digital art can extend our legacies beyond the limitations of material and physical reality, into the digital and virtual future.”**

***Message from Our Planet***  
**Curator Jason Foumberg**

---

**October 1–December 31, 2022**  
***Message from Our Planet: Digital Art from the Thoma Collection***  
**Fourth Floor Gallery**

*Message from Our Planet*, curated by the Carl and Marilynn Thoma Foundation, brings together 20 unique software, video, and light-technology artworks created by a diverse group of international artists working at the forefront of digital and electronic art. The exhibition proposes that media technologies—from vintage devices to cutting-edge digital algorithms—offer distinct ways for artists to communicate with future generations. Organized like a time capsule, the exhibition’s artworks reflect the artifacts and ambitions of contemporary society.

Supporting Sponsor:  
**American Bank & Trust**

Contributing Sponsor:  
**Carolyn Levine & Leonard Kallio Trust**

**A**n art collection is like a time capsule. Both are designed to preserve the past and serve as a representation of the time in which they were created. But what about digital art? What impact will digital art have on future generations?

*Message from Our Planet: Digital Art from the Thoma Collection* attempts to answer that question through 20 software, video, and light-technology artworks that each demonstrate vivid worldviews. Created by a diverse group of international artists working at the forefront of digital and electronic art, these works embody the human desire to communicate deeply yet be understood universally.

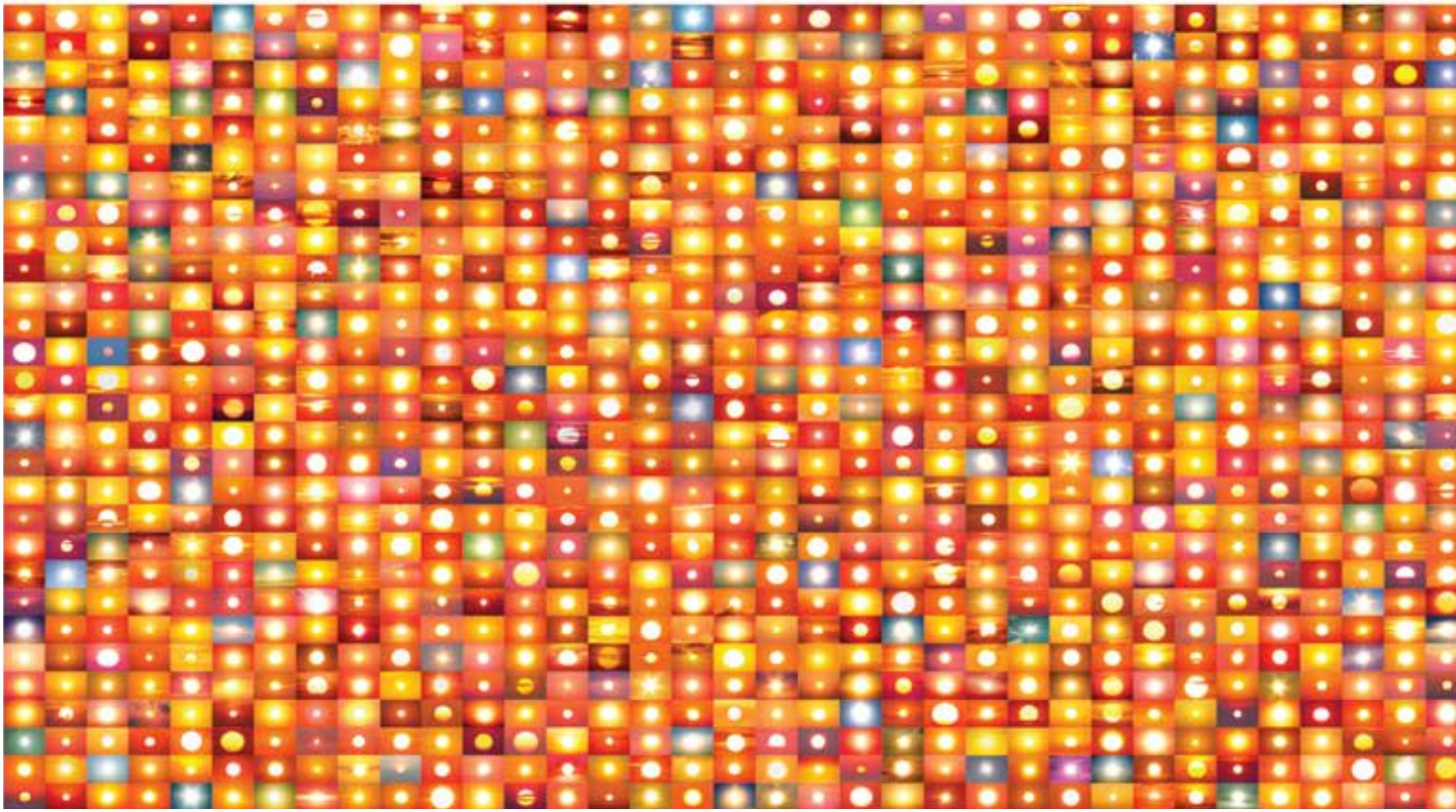
"The theme for this exhibition came to me while I was thinking about time capsules, especially the need for humans to be remembered through our objects and our actions," said Curator Jason Fomberg.

"Artists want to feel seen, heard, and have a legacy.



Robert Wilson, *LADY GAGA: Mademoiselle Caroline Rivière*, 2013, high-definition video on plasma monitor, music by Michael Galasso, © Robert Wilson, photo by RW Work LTD / Julian Mommert



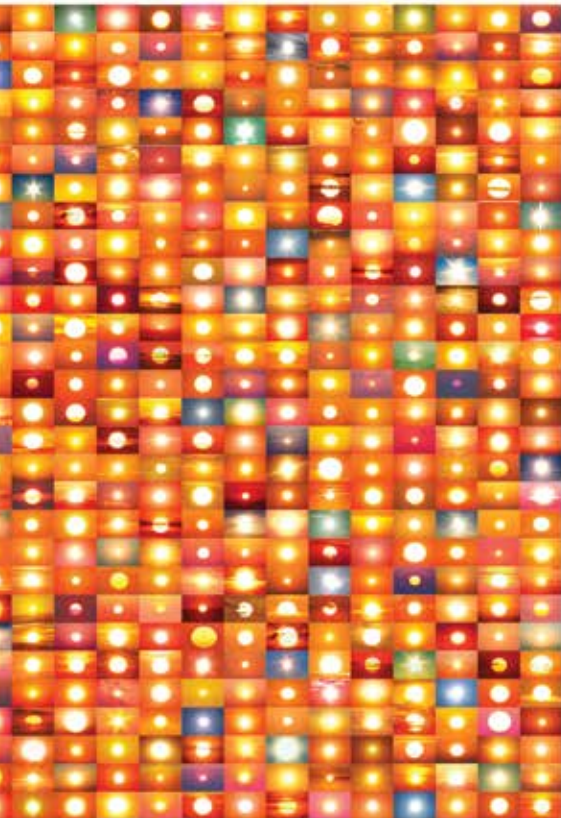


Penelope Umbrico, *48,586,054 Suns from Sunsets from Flickr (Partial)* 11/05/20, 2020. 1,440 chromogenic machine prints on paper. © Penelope Umbrico

I wondered what a contemporary time capsule updated for the digital age might look like and included artworks that play with communication technologies, since we can look at technology and art to track humankind's progress."

The exhibition proposes that media technologies—from dated devices to cutting-edge digital algorithms—offer distinct ways for artists to communicate with future generations. Organized like a time capsule, the exhibition's artworks reflect the artifacts and ambitions of contemporary society.

Inspired by NASA's Golden Record—the gold-plated copper phonograph record launched with the Voyager 1 spacecraft to communicate a story of our world to extraterrestrials—the exhibition proposes that artworks may, in theory, be reconstituted from their digital code by future generations.




---

## Companion program

**Thu, Dec 1**  
**Free Senior Day**

**TBA**  
**Curator Talk: Jason Foumberg**

Check the website for details



Tabita Rezaire, *Sorry for Real*, 2015.  
Single-channel digital video. © Tabita Rezaire

Will others be inspired by our achievements and model themselves on our masterpieces like the Romans did the ancient Greeks? Will there be a museum dedicated to the Information Age? How will our messages be received? These are the questions this exhibition addresses.

“*Message from Our Planet* stands apart from many art exhibits because it contains almost exclusively digital, new media, and time-based art,” says Foumberg. “Even the works on paper and sculptures were generated using custom algorithms and computer code. With many electronic lights, video projections and animations, the exhibit is intended to be bright, loud, and appeal to people who play video games as well as those who love colorful, optical, and witty contemporary art.”

*Message from Our Planet: Digital Art from the Thoma Collection* is curated by the Carl and Marilynn Thoma Foundation and will be on view at the Figge through December 31, 2022.

September 17, 2022-January 8, 2023

### ***Peace, Power, and Prestige: Metal Arts in Africa***

Third Floor Gallery

*Peace, Power, and Prestige: Metal Arts in Africa* explores the roles of metal objects in sustaining and enhancing life in African communities, while demonstrating the aesthetic and expressive power of metal arts. For millennia, African metalsmiths have drawn upon the inherent power and beauty of metal to create objects including jewelry, weaponry, regalia, and sacred ceremonial objects. With over 140 pieces, the exhibition includes a diverse range of iron, brass, bronze, gold, copper, silver and alloyed works created by artists in Sub-Saharan Africa between the 12th and 21st centuries. The selected objects are from the Harn Museum

of Art collection and private collections, most notably the Drs. John and Nicole Dintenfass collection.

*Peace, Power, and Prestige: Metal Arts in Africa* is organized by the Samuel P. Harn Museum of Art at the University of Florida and is made possible with support from the UF Office of the Provost, Dr. Richard H. Davis and Mrs. Jeanne G. Davis, the C. Frederick and Aase B. Thompson Foundation, and the UF Office of Research, with additional support from other generous donors.

#### Companion programs

**Thu, Sept 22**  
**Virtual Curator Talk:**  
**Dr. Susan Cooksey**  
6:30 p.m.

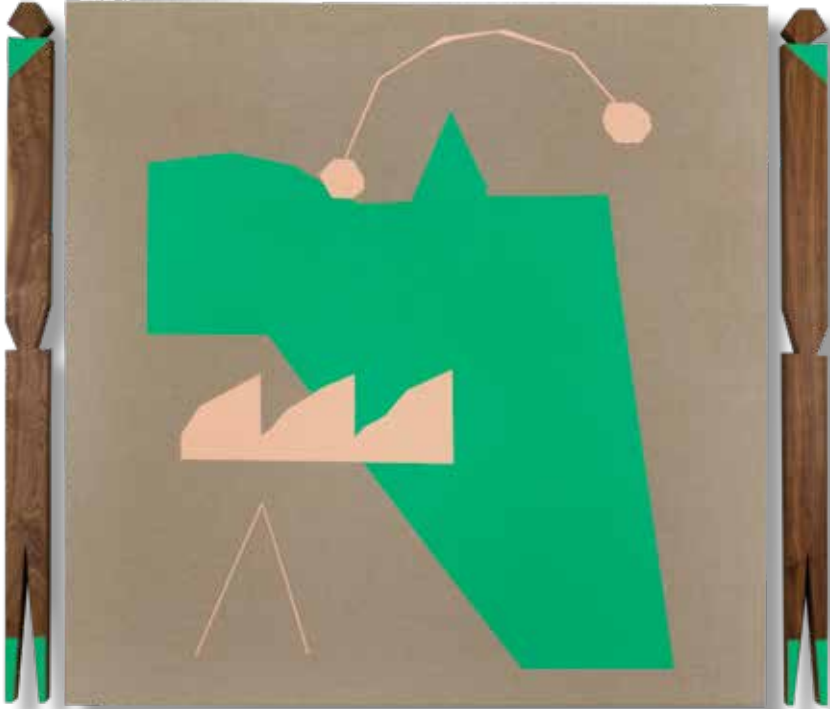
**Thu, Oct 6**  
**Free Senior Day**



**L:** Kota-Obamba or Mindimbu artist, Gabon, Reliquary Guardian Figure (*mbulu ngulu*), 19th century, brass, copper, wood, Collection of Drs. John and Nicole Dintenfass, Photo Courtesy of Vincent Girier Dufournier

**R:** Yoruba artist, Nigeria, Seated edan Ọgbóni/Ọsùgbó figure holding two children, flanked by two supplicants, 18th century (1760–1780), iron, brass/bronze, Collection of Drs. Nicole and John Dintenfass





Caroline Kent, *Valiant postures/A ruse! A ruse!*, 2021, acrylic on Belgian linen, acrylic on walnut, 63" x 74" x 2 1/2", Image courtesy of the artist and PATRON Gallery, Chicago. Photography by Evan Jenkins, © Caroline Kent

October 1, 2022– February 4, 2023

### **Caroline Kent: An Improvisation of Form**

Katz Gallery

**“Language is a capacious subject to work through in a painting practice,” says artist Caroline Kent. “It can act in a myriad of ways from elusive and hidden one moment to expressive and illuminating in another. This potential to act in unexpected ways is what keeps me engaged and curious.”**

This fall, the Figge welcomes Chicago-based artist Caroline Kent as she presents an overview of her works created in the last decade. The installation will transform the Figge’s Katz Gallery into an immersive exhibition of paintings, site specific interventions, and sculptures, surrounding visitors in a unique synthesis of language and abstract forms.

At the center of Kent’s practice is an invented vocabulary composed of geometric forms, hand-drawn marks, and color often set against a black ground. The shapes in her works act as illegible symbols in a diagram for an unknown place or mechanism, or a pictogram for which there is no cipher. The linework in her painting also seemingly strives to communicate through indecipherable calligraphic marks. Kent’s formation of a symbolic

language poses questions to viewers about the purpose of a system of language that moves beyond normative structures of communication. Should all language be able to be understood? Are there benefits to a system of communication that defies translation? What is the relationship between abstraction and language?

“I grew up in the Midwest in Sterling, Illinois, and want to present what an expanded painting practice looks like,” said Kent. “I want to demonstrate how language, translation and abstraction can all come together through painting in cohesive, legible or illegible ways. I want for the audience to be able to make connections between geography, creativity, imagination, and place.”

---

### **Companion programs**

#### **Thurs, Oct 6 Opening Program Artist Talk: Caroline Kent**

5 p.m. Meet and Greet  
(cash bar, light snacks)  
6:30 p.m. Artist Talk: Caroline Kent

#### **Thu, Jan 5 Free Senior Day**

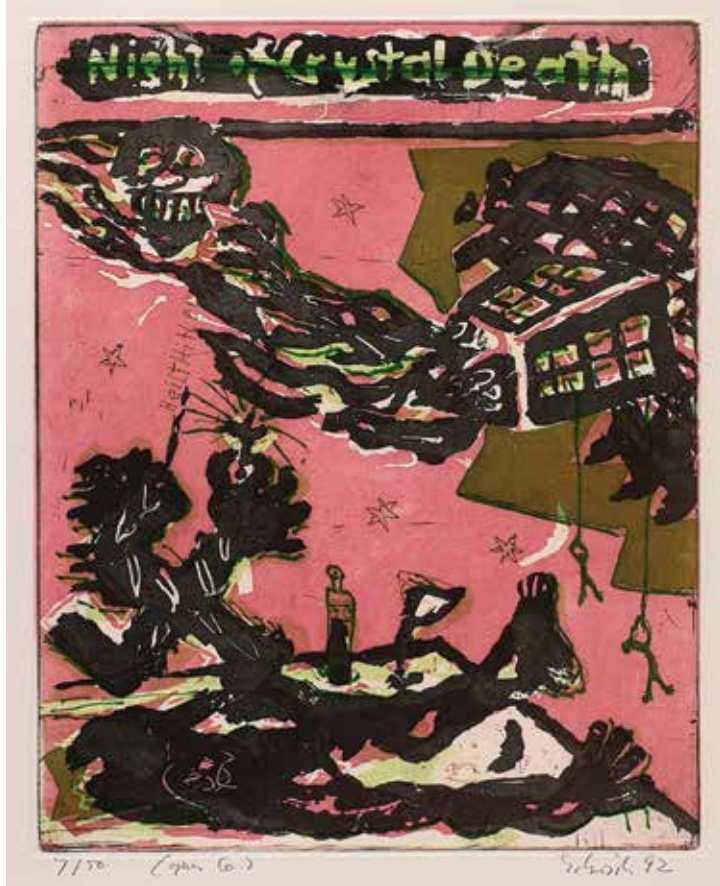
Through January 15, 2023

### **Erwin Eisch, Mauricio Lasansky, and Zoya Cherkassay: Artists Remember**

Gildehaus Gallery

Featuring the work of accomplished printmakers Erwin Eisch, Mauricio Lasansky, and Zoya Cherkassay, *Artists Remember* explores the unique imagery artists use to confront the deplorable history of Nazi era oppression and genocide. Their works provide us with a safe place for thoughtful recognition and reflection on one of the worst chapters in human history. This exhibition is being presented as part of *Out of Darkness: Holocaust Messages for Today*, a community-wide effort of cultural organizations, educators, libraries, and sponsors to help children and adults remember and learn from the Holocaust.

Contributing sponsor: **Jewish Federation of the Quad Cities**



Erwin Eisch, German, 1927-2022, *Opus 6 from the Night of the Crystal Death* portfolio, 1992, viteograph print on paper, Collection of the Jewish Federation of the Quad Cities, © Erwin Eisch



## OUT OF DARKNESS

HOLOCAUST MESSAGES FOR TODAY

### **Out of Darkness: Holocaust Messages for Today**

is a collaborative effort of twenty local cultural organizations, educators, libraries and sponsors working together to achieve four common goals:

- Provide a forum for collaboration within the community and region using Holocaust history to prompt dialogue on issues that are relevant today.
- Educate the next generation of community leaders on the lessons of history and how those apply today.
- Build a more vibrant, inclusive and tolerant community by giving context to the patterns of history around racism, exclusion and authoritarianism.

- Create social capital by bonding, bridging and linking partners to create a whole that is greater than the sum of its parts for greater community impact.

This initiative was inspired by the upcoming Quad City Symphony Orchestra performance of *Two Remain (Out of Darkness)*, a chamber opera written in 2016 by Jake Heggie with libretto by Gene Scheer. *Two Remain* tells the true story of two Jewish Holocaust survivors, Krystyna Zywulska and Gad Beck.

### **Program Presenters**

Augustana College  
Ballet Quad Cities  
Black Box Theatre

Danville Station Museum  
Figge Art Museum  
German American Heritage Center  
Holocaust Education Committee of the Quad Cities  
Iowa Jewish Historical Society  
Jewish Federation of the Quad Cities  
Moline Public Library  
Nahant Marsh  
National Czech and Slovak Museum  
Putnam Museum and Science Center  
Quad City Botanical Center  
Quad City Symphony Orchestra  
Rock Island Public Library  
St. Ambrose University  
University of Iowa  
WQPT-TV  
WVIK



## Employee Spotlight

# Q&A with Tony Trout

**As Facilities Manager, Tony Trout works behind-the-scenes to ensure the building is operational for our staff and visitors. In this staff spotlight, Tony tells us a little about his role and what he's looking forward to.**

### **How long have you been with the Figge?**

The Figge opened in August of 2005, and I started working in March of 2006, so I have been at it for over 16 years.

### **What is one part of your job you think the public would be surprised to know?**

I do a ton of walking! The building is 115,000 square feet, and it's my job to make sure everything is in working order and operational every single day.

### **What is a typical day on the job for you?**

My day starts with a walk through of all the mechanicals, pumps, chiller, boiler room, water heaters, etc. I do a daily sweep so I can address any major maintenance issues before my day begins. With the building being 17-years old, there are always things to troubleshoot in between my daily meetings with contractors.

### **What are you looking forward to most in your new role?**

I want to make sure the building stays up-to-date and presentable for our staff and visitors. There is a high standard for this building, since it is home to some exceptional artwork, and I want to continue to meet or even exceed that standard.

### **Do you have a favorite exhibition from your time at the Figge?**

I have two favorite exhibitions. The first was *Clear Your Mind: Contemporary Glass Invitational* from Rock Island artist Mark Fowler. I loved seeing his creations and the fact he is a local artist was even cooler. The second was *The Art of Architecture: LEGO Sculptures* by Adam Reed Tucker. It was fun for adults and kids to see those large LEGO sculptures in the gallery.





New Acquisition

# Larassa Kabel, *Spirit House*

**“As a contemporary memento mori artist, I create art to remind myself and others that we are all going to die. Me. You. Everyone you care about. This seems obvious, and yet the fear of death, which haunts the human race like nothing else, inspires us to go to great lengths to pretend it isn’t true.”**

Larassa Kabel, 2022

Death is ubiquitous and inescapable, as are questions about what may lay beyond it. This is perhaps why humankind's relationship to death has been explored by artists more than nearly any other concept. Larassa Kabel's artistic practice continues this tradition through life size drawings of horses plummeting to the ground, reinterpretations of ancient tomb structures, recreated stories from the *Book of the Dead*, and other contemporary takes on this morbid topic.

*Spirit House* is a miniature version of Kabel's home in Des Moines, created from sections of paper wasp nests that formed on the outside of her residence. Kabel felt sympathy for these insects and was dismayed when her husband repeatedly knocked the nests down. Kabel imagined this destructive act from the perspective of the wasps; diligently building their nests, caring for their community, and suddenly their world is destroyed without warning or explanation.

The tradition of including models of dwellings inside a tomb is prevalent in many cultures, including ceramic versions from China and woven rattan examples from Polynesia. Kabel is most directly influenced by the Soul Houses found in Egyptian tombs, in which the small models are buried alongside the deceased to provide a place for their spirit to dwell after death. Kabel has modernized this idea by making a model of her home out of the elements of another being's dwelling (the wasp's nest). This work forces viewers to contemplate what their beliefs about the afterlife are, and what kind of space they hope to inhabit after death, if any. The Figge Art Museum is pleased to announce that Kabel's *Spirit House* joined the museum's collection in June 2022.



Larassa Kabel, *Spirit House*, 2021, wasp paper, paper, wood, paint, and monofilament, Figge Art Museum, Friends of Art Acquisition Fund, 2022.18, Image courtesy of the artist, ©Larassa Kabel

# Mark your calendar

## You cannot miss these recurring Figge favorites!

First Thursday of each month

### Free Senior Day

The first Thursday of every month is Free Senior Day! All seniors age 60 and up receive free admission, as well as 10% off in the Museum Store. Enjoy a 1 p.m. gallery tour followed by a 2 p.m. film or art-making activity. All FREE!

- October 6: *Peace, Power and Prestige*, the Harn Museum
- November 3: Figge and the Joslyn Collection
- December 1: *Message from Our Planet*
- January 5: *Caroline Kent: An Improvisation of Form*

### Thursday at the Figge

Join in the fun during the Thursdays at the Figge program series! These programs feature artists, curators, scholars, and community partners to explore creativity in all forms. Most programs currently are being offered in person, but to ensure a safe and enjoyable experience for all be sure to check online for more information about the format each week. Regardless of format, programs are still free to attend though registration may be required. For virtual offerings, registrants will receive an e-mail with a Zoom link two hours prior to the program.

For more information or to register (when required), visit [www.figgeartmuseum.org](http://www.figgeartmuseum.org).

*Free admission and programs for Thursdays at the Figge  
Chris and Mary Rayburn*

First Thursday of each month, 6–8 p.m.

### Wine & Art

\$20, all supplies included

Enjoy a variety of studio classes paired with a glass of wine, light snacks, and socializing. Each session features a different art medium, and students create finished works of art to take home. All supplies, snacks, and wine are provided. Check calendar for specific dates.

Every other Friday (see pg. 15 for dates) 5:30–8:30 p.m.

### Figure Drawing

\$15, bring your own supplies

Practice your figure drawing skills in these facilitated classes held every other Friday. These are not instructed classes and participants must bring their own supplies. Registration is required.

First Saturday of each month 5:30–8:30 p.m.

### Yoga at the Figge

\$5, bring your own mat

Join us at the Figge for yoga asana. Bring your own mat for this movement-based class led by instructors from Tapas Yoga Shala. The class will take place surrounded by art in the Quad City Bank and Trust Grand Lobby at the Figge Art Museum, where participants will face the windows overlooking the beautiful Mississippi River.

### Happy Little Trees

\$30 per session; supplies included

Want to paint picturesque landscapes like the ones Bob Ross taught? At Happy Little Trees, you can learn to make a beautiful painting in one sitting.

- Saturday, September 24, 10 a.m.–12 p.m.
- Saturday, October 22, 1–3:30 p.m.
- Saturday, November 12, 1–3:30 p.m.
- Saturday, December 10, 1–3:30 p.m.

### Art Cart

Find our art cart in selected galleries for in-depth conversations about art! Books, objects, gallery games and information, along with a trained docent, will be available for guests to explore art topics in new ways.



# Sept

Plan a visit to the Figge around these openings, classes, and other special events. Program and event changes may occur; view updates at [figgeartmuseum.org](http://figgeartmuseum.org)

**M** = Member fee

**NM** = Non-member fee

---

## Sat, year round Oil Painting

4 classes beginning the Saturday of your choice  
9:30–11:30 | \$150 (M) or \$165 (NM)  
Instructor: David Anderson

**Thur, Sept 15**  
**Back to School—Teacher Appreciation Open House**  
3:30–6:30 p.m.

**Sat, Sept 17**  
**Exhibition Opens:**  
*Peace, Power, and Prestige: Metal Arts in Africa*

**Thur, Sept 22**  
**Virtual Curator Talk:**  
**Dr. Susan Cooksey**  
6:30 p.m.

**Sat, Sept 24**  
**Happy Little Trees**  
10 a.m.–12 p.m. | \$30 per person  
Instructor: Allen Holloway

**Sun, Sept 25, Oct 23, Nov 27, Dec 18**  
**Cultivating Mindfulness**  
5:30–6:30 p.m. | \$10 suggested donation  
Becky Brooke

**Mon, Tues, Sept 26–27**  
**Pastel Portrait Seminar**  
5:30–8:30 p.m. | \$150 (M) or \$165 (NM)  
Instructor: Cecile Houel

**Thur, Sept 29**  
**Portfolio Day**  
9:30 a.m.–12 p.m.

**Thur, Sept 29**  
**Film: *Departures***  
6:30 p.m.

**Fri, Sept 30; Oct 14, 28; Nov 4, 18; Dec 2, 16**  
**Figure Drawing**  
5:30–8:30 p.m. | \$15 per person  
Instructor: Peter Xiao or Paul Lange

# Oct

**Sat, Oct 1**  
**Exhibition Opens:**  
*Message from Our Planet: Digital Art from the Thoma Collection*

**Sat, Oct 1**  
**Exhibition Opens: *Caroline Kent***

**Sat, Oct 1 & 8**  
**Clay for Kids**  
Ages 5–9  
9:30 a.m.–12 p.m. | \$150 (M) or \$165 (NM)  
Instructor: Alexandria Medency

**Sat, Oct 1**  
**Yoga at the Figge**  
10:30–11:30 a.m. | \$5 per person  
Bring your own mat

**Sat, Oct 1 & 8**  
**Clay for Kids**  
Ages 9–12  
12:30–2 p.m. | \$150 (M) or \$165 (NM)  
Instructor: Alexandria Medency

**Sat, Oct. 1, 8, 22, 29**  
**Paint Like an Artists Series**  
Ages 5–9  
9–10:30 a.m. | \$145 (M) or \$160 (NM)  
Instructor: Laura Warner

**Sat, Oct 1, 8, 22, 29**  
**Colors of Autumn**  
Ages 5–9  
10:30 a.m.–12 p.m. | \$135 (M) or \$150 (NM)  
Instructor: Pat Bereskin

**Sat, Oct 1, 8, 22, 29**  
**Colors of Autumn**  
Ages 9–12  
1–2:30 p.m. | \$135 (M) or \$150 (NM)  
Instructor: Pat Bereskin

**Tues, Oct 4, 11, 18, 25**  
**Wheel Throwing**  
5:30–7 p.m. | \$150 (M) or \$165 (NM)  
Instructor: Laura Warner

**Tues, Oct 4, 11, 18, 25**  
**Cultures and Containers Series**

4-5 p.m. | \$175 (M) or \$190 (NM)  
 Instructor: Laura Warner

**Tues, Oct 4, 11, 18, 25, Nov 1**  
**Making Your Mark**

6-8 p.m. | \$150 (M) or \$165 (NM)  
 Instructor: Gloria Burlingame

**Thursdays Oct, 6, 13, 20, 27**  
**Watercolor Painting**

8:30-10:30 a.m. | \$135 (M) or \$165 (NM)  
 Instructor: Pat Bereskin

**Thur, Oct 6**

**Opening Program: Caroline Kent**

5 p.m. Meet and greet (cash bar, light snacks)  
 6:30 p.m. Artist Talk: Caroline Kent

**Thur, Oct 6**

**Wine & Art: Dia de los Muertos**

6-8 p.m. | \$20 per person

**Thur, Oct, 6, 13, 20, 27**  
**Watercolor Painting**

8:30-10:30 a.m. | \$135 (M) or \$165 (NM)  
 Instructor: Pat Bereskin

**Thur, Oct 6, 13, 20, 27**  
**Intro to Acrylic Painting**

11 a.m.-1 p.m. | \$135 (M) or \$150 (NM)  
 Instructor: Brad Bisbey

**Thur, Oct 13**

**Performance: SPACES**

6 p.m.

**Sun, Oct 16**

**Exhibition Opens:**  
**Day of the Dead: The Art**  
**of Remembrance**

**Sun, Oct 16**

**Free Family Day:**  
**Day of the Dead**

Noon-3 p.m.

Free admission all day

Sponsored by: MidAmerican Energy Company



**Thur, Oct 20**

**Virtual In Conversation: Jake**  
**Heggie and Ernesto Estigarribia**

6 p.m.

**Sat, Oct 22 & 29**  
**Clay for Kids**

Ages 5-9  
 9:30 a.m.-11 a.m. | \$150 (M) or \$165 (NM)  
 Instructor: Alexandria Medency

**Sat, Oct 22**  
**Happy Little Trees**

1-3:30 p.m. | \$30 per person  
 Instructor: Allen Holloway

**Sat, Oct 22 & 29**  
**Clay for Kids**

Ages 9-12  
 12:30-2 p.m. | \$150 (M) or \$165 (NM)  
 Instructor: Alexandria Medency

**Wed, Oct 26, Nov. 2, 9, 16**  
**Concept Art**

(prerequisite Illustration 1)  
 Ages 9-18  
 5-7:30 p.m. | \$150 (M) or \$165 (NM)  
 Instructor: Emme Hubner

**Thur, Oct 27, 6:30 p.m.**  
**Film: Foxtrot**

# Nov

**Tues, Nov 1, 8, 15, 22**  
**Wheel Throwing**

5:30-7 p.m. | \$150 (M) or \$165 (NM)  
 Instructor: Laura Warner

**Tues, Nov 1, 8, 15, 22**  
**Cultures and Containers Series**

4-5 p.m. | \$175 (M) or \$190 (NM)  
 Instructor: Laura Warner

**Thur, Nov 3, 10, 17**  
**Watercolor Painting**

8:30-10:30 a.m. | \$135 (M) or \$165 (NM)  
 Instructor: Pat Bereskin

**Thur, Nov 3**  
**Wine & Art: Fingerpainting**

6-8 p.m. | \$20 per person  
 Instructor: Amy Nielsen

**Thur, Nov 3, 10, 17**  
**Loosen Up in Acrylic Paint**

11 a.m.-2 p.m. | \$135 (M) or \$150 (NM)  
 Instructor: Brad Bisbey

**Yoga at the Figge  
Sat, Nov 5**

10:30-11:30 a.m. | \$5 per person  
Bring your own mat

**Sat, Nov 5, 12, 19  
Beginning Drawing**

1-2:30 p.m. | \$110 (M) or \$125 (NM)  
Instructor: Pat Bereskin

**Sat, Nov 5, 12, 19  
Beginning Drawing for Children**

Ages 5-9  
9-10:30 a.m. | \$110 (M) or \$125 (NM)  
Instructor: Pat Bereskin

**Sat, Nov 5, 12, 19,  
Beginning Drawing for Children**

Ages 9-13  
11 a.m.-12:30 p.m. | \$110 (M) or \$125 (NM)  
Instructor: Pat Bereskin

**Sun, Nov 6  
Exhibition closes: *Day of the  
Dead: The Art of Remembrance***

**Thur, Nov 10  
St. Ambrose University Art  
History Club Night**

4-6 p.m. Artwork Silent Auction

**Thur, Nov 10  
Urban Exposure Film Premiere**

5 p.m. Reception  
6:30 p.m. Film

**Sat, Nov 12  
Happy Little Trees**

1-3:30 p.m. | \$30 per person  
Instructor: Allen Holloway

**Fri, Nov 17  
Film: *It's Only the End of  
the World***

6:30 p.m.

**Sat, Nov 19  
Free Family Day –  
Post-Parade Party**

Sponsored by: Cobham Mission Systems

**Thur, Nov 24**

No program (Thanksgiving)

**Sun, Nov 27, 12 -5 p.m.  
Museum Store Sunday**

Free gift wrap; no tax

# Dec

**Thur, Dec 1  
Reflection, Celebration, &  
Rejuvenation: World AIDS Day  
Partner Program**

6 p.m.

**Thur, Dec 1  
Holiday Workshop**

6-8 p.m.

**Sat, Dec 3  
Yoga at the Figge**

10:30-11:30 a.m.  
\$5, Bring your own mat

**Tues, Dec 5, 7, 12, 14  
Wheel Throwing**

5:30-7 p.m. | \$150 (M) or \$165 (NM)  
Instructor: Laura Warner

**Mon, Wed, Dec 5, 7, 12, 14  
Cultures and Containers Series**

4-5 p.m. | \$175 (M) or \$190 (NM)  
Instructor: Laura Warner

**Thur, Dec 8  
Member Dinner**

6 p.m.

**Sat, Dec 10  
Happy Little Trees**

1-3:30 p.m. | \$30 per person  
Instructor: Allen Holloway

**Thur, Dec 15  
Film: *Drive My Car***

6:30 p.m.

**Sun, Dec 31  
Exhibition Closes: *Message from  
Our Planet: Digital Art from the  
Thoma Collection***

---

**Thursdays at the Figge  
programming will be on  
hiatus from December 22  
through January 2023.  
Programming will resume  
in February.**

# Jan

**Sun Jan 1  
Exhibition Closes: *Living Proof  
Exhibit: A Visualization of Hope***

**Sun, Jan 8  
Exhibition Closes:  
*Peace, Power, and Prestige:  
Metal Arts in Africa***

**Sun, Jan 15  
Exhibition Closes:  
*Erwin Eisch, Mauricio Lasansky,  
and Zoya Cherkassay: Artists  
Remember***



# Education highlights

## **Living Proof Exhibit: A Visualization of Hope**

September 10, 2022–January 1, 2023  
Mary Waterman Gildehaus Community Gallery

Living Proof Exhibit believes in the therapeutic benefits of the arts for all, and especially those who are impacted by cancer. The artists showcased in this exhibition are cancer survivors who have used art to celebrate and reflect upon survival. Their artworks are the visual embodiment of hope and healing.

Sponsored by: **Genesis Health System**

## **Back to School—Teacher Appreciation Open House**

Thursday, September 15, 3:30–6:30 p.m.

The Figge welcomes all educators to explore the museum's education resources, and enjoy complimentary refreshments, door prizes, and activities.

## **Portfolio Day**

Thursday, September 29, 9:30 a.m.–12 p.m.

Attention art and design students: applying for scholarships or college admission? Visit with professors from area colleges and receive feedback on your portfolio. Representatives from several colleges, universities, and art schools will be available. Free, but registration is required. To register or for more information, contact Brian Allen at [ballen@figgeartmuseum.org](mailto:ballen@figgeartmuseum.org).

## **Clay is now at the Figge!**

With 8 pottery wheels in our clay studio, you can get your hands dirty in a variety of clay classes, including Wheel Throwing. Also, contact us if you are interested in a ghost-inspired Clay Date Night.

## **Day of the Dead: The Art of Remembrance**

October 16–November 6

Join us during this special time of year. What makes this traditional Mexican holiday so special? Why is it taking on new meaning and proportions in the United States and beyond? Explore how we as humans celebrate and remember the lives of our lost loved ones through the collective traditions, artmaking and story-telling that are integral parts of Día de los Muertos.

A mobile audio tour, in-gallery activities, altar display, and Catrinas in the galleries will all be a part of the ongoing celebration, kicking off on Sunday, October 19 at the Family Fiesta. Check the Figge's online calendar for a list of free maker sessions!

Supporting sponsor:  
**MidAmerican Energy Company**

## **Free Family Days**

Join us for fun with the whole family at the Figge. Guests will receive free admission all day, along with a wonderful selection of activities throughout the museum. Art-making, gallery interactions, films and activities will be inspired by current exhibitions.

- Sunday, October 16, Noon–3 p.m.  
*Day of the Dead*
- Saturday, November 19, 11 a.m.–1 p.m.  
Post-Parade Party

## **Figge Factory T-Shirt Design Contest**

Attention high school artists and designers – the Figge is holding its annual Figge Factory T-shirt Design Contest. Send us your original T-shirt design by December 2, 2022. The winner's design will be printed on shirts that will be for sale in the museum's store. The winner will also receive \$100 cash, a family membership to the Figge Art Museum, and a private screen-printing party for them and three friends. For more details visit [www.figgeartmuseum.org](http://www.figgeartmuseum.org) or contact Brian Allen, Studio School and Education Galleries Coordinator at [ballen@figgeartmuseum.org](mailto:ballen@figgeartmuseum.org).



---

# Tours

## Guided Tours

Taking a tour of the galleries with one of our experienced docents is not only a great conversation starter, but also a wonderful way to gain new insights into the art around you. Make sure to check out our public tour schedule or contact Heather at [haaronsen@figgearmuseum.org](mailto:haaronsen@figgearmuseum.org) to schedule a private tour for your group.

## Specialty Tours

Museum guests can join Figge staff and docents for tours featuring a special exhibition. These intimate, 30-minute tours will feature insights into the exhibition and will offer a range of topics for discussion. Register on the Figge website or at the front desk. This fall, we will feature: Figge and the Joslyn Collection; Carolyn Kent; Peace, Power and Prestige; and Thoma.

## Exhibition Highlights Tours

These tours are an intro to the highlights of our exhibitions and collections.

# ART ACADEMY at the FIGGE



## Figge Studios Bustling with Bereskin Merger

The newly branded Art Academy at the Figge is in full swing. Pat Bereskin, who has been teaching art to children for three decades at the Beréskin Gallery & Art Academy, has moved all of her class offerings for intermediate to advanced level students in upper elementary school through high school to the Figge studios. Classes for younger students are being held at the Family Museum in Bettendorf.

"I knew it was time for me to take a step back and think about my legacy," said Bereskin. "The Figge and Family Museum are the perfect venues for my art academy to continue to thrive and I'm excited I can focus on my art and teaching during this next chapter."

The adult and kid classes previously offered at Bereskin Gallery & Art Academy will fold into the Figge Studio School and remain intact for future generations to experience.

"The studios are vibrant and filled with people every single day," said Figge Studio School and Education Galleries Coordinator Brian Allen. "With the addition of Pat's classes and teachers, there really is something for everyone."

To register for a class and see a full listing of our offerings, visit [www.figgearmuseum.org](http://www.figgearmuseum.org).



# Q&A with Alice Walton

## Founder and Board Chair, Art Bridges Foundation



Alice Louise Walton is the daughter of Walmart founder Samuel Walton and the Founder and Board Chair of the Art Bridges Foundation. Walton has been an avid art collector for many years and founded the Crystal Bridges Museum of American Art in her hometown of Bentonville in 2011.

Her latest initiative is the newly established Art Bridges Collection Loan Partnership designed to support long-term collection loan partnerships among U.S. museums of all sizes. This partnership is the result of Walton's vision and the Figge is fortunate to be one of the participating institutions in its inaugural year.

### **Where does your love of art stem from?**

Growing up, my mother and I spent family camping trips painting watercolors of mountains and creeks. It was the connection that began my love of art. I'm a passionate amateur historian focused on our country, so it's only natural that my interest would develop around American art. I've learned so much about our country's history through the eyes of its artists.





Gallery Shot, Figge Art Museum, 2022.

### **The Art Bridges Collection Loan Partnership is your vision — how did you come up with this remarkable idea?**

We created the Art Bridges Foundation with the mission of expanding access to American art across the nation. Art Bridges works with museums of all sizes to provide collection loans, traveling exhibitions, learning & engagement programming, in addition to financial and strategic support. I'm a firm believer that great art should not be sitting in storage, it should be on view where people can enjoy and engage with it.

This year, led by CEO Paul Provost, we are thrilled to announce the **Art Bridges Collection Loan Partnership**. To launch this initiative, we worked with three partners—Los Angeles County Museum of Art, Crystal Bridges Museum of American Art in Bentonville, Arkansas, and Joslyn Art Museum in Omaha, Nebraska—to make artworks from their permanent collections available on long-term loan, ensuring that great works of art can be seen in other parts of the country. The Collection Loan Partnership will also work to increase works of art by BIPOC, LGBTQIA+, and women artists in our museum partners galleries and fill in gaps in museum collections.

### **The impact of your vision is being felt in the Quad Cities and all over the country thanks to this partnership and the Figge was thrilled to be one of the partners chosen for the first year of the CLP. What are some of the things you hope this loan partnership will accomplish not only at the Figge, but around the country?**

Through Art Bridges's work with our museum partners, we hope to attract new audiences that traditionally don't think a museum is for them. Through funding and additional support, we can help museums around the country tell a new and expanded story and bring in new audiences. To me, that is just thrilling.

### **What is your favorite artwork and/or artist and why?**

Powerfully regal and dignified, Barkley L. Hendricks, *Brenda P*, from the Art Bridges Collection is one of my favorites.

Figge + Joslyn

## **Art Bridges Collection Loan Partnership**

Through September 17, 2023  
Permanent Collection Galleries

For the next year, works from the Joslyn Art Museum and the Figge Art Museum are being presented in conversation with one another throughout the permanent collection galleries. Made possible through the Art Bridges Collection Loan Partnership, the project features thematic groupings that encourage visitors to make comparisons between the artworks. The Joslyn has lent outstanding works by artists such as Mary Cassatt, Kehinde Wiley, and Alexander Calder. In tandem with works by Yuriko Yamaguchi, Gertrude Abercrombie, and Diego Romero, and others from the Figge collection, this project will spark new conversations in the museum. Interpretation and programming will evolve over the course of the exhibition and embrace collaboration and community perspectives.

The Art Bridges Foundation began the Collection Loan Partnership to "bring American art out of museum vaults and on view in communities across the United States." Many museums have significant collections with only a small percentage of those works on view. By connecting museums such as the Joslyn Art Museum in Omaha, Nebraska, with museums like the Figge Art Museum, these artworks can be shown to new audiences nationwide.

Generous support provided by:

**Art Bridges**



# Caught camera





on



# Art at Heart Gala

A special thanks to the 2022 Art at Heart Gala sponsors!

PREMIER SPONSOR



The Singh Group

SUPPORTING SPONSORS



TABLE SPONSORS

- Barry Anderson of Anderson, Lower, Whitlow, P.C.
- BITCO Insurance Companies
- Jeff and Susie Eirinberg
- Global Partners Alliance LLC
- Mary Lind and Tom Lytton
- Susan Quail of Q<sub>10</sub> Enterprises
- Trimble Pointe Companies and Trimble Family
- US Bank
- James and Melissa von Maur
- Cathy Weideman and John Gardner
- Xenotronics Company
- Mark and Barbara Zimmerman





# Area College Students Belong at the Figge!

**Institutional memberships are just one of the many membership options available at the Figge. Several area colleges and universities take advantage of their institutional membership to allow students, faculty, and staff to visit the museum, free of charge, all year round.**

The partnerships established with area colleges and universities, including Augustana College, Black Hawk College, Palmer College of Chiropractic, Eastern Iowa Community Colleges, St. Ambrose University, University of Iowa, and Western Illinois University ensure these schools are aware of all that is happening at the Figge. From exhibitions, programs, and classes, the museum provides an escape from the daily academic grind, allowing students to explore and to be inspired by world-class artwork on view.

“We want to build a relationship with these students so they become familiar with how the museum can enrich their lives,” said Membership and Database Coordinator Carlie Allison. “Arts and culture are woven into the fabric of the Quad Cities community, and having an institutional membership sets the stage for these students to consider joining as adults.”

The museum has many membership options to choose from. Whether you are part of these area institutional members, an individual, couple, or household, membership to the museum has tremendous benefits. Become a member today!

For more information on institutional membership or other membership options, visit [www.figgeartmuseum.org](http://www.figgeartmuseum.org) or contact Carlie Allison at [callison@figgeartmuseum.org](mailto:callison@figgeartmuseum.org).

---

## Institutional Membership Benefits:

- Unlimited free admission with valid ID to all exhibitions
- Faculty members may bring classes to the Figge without admission fees
- Use of the auditorium and studios for art-related academic instruction (subject to availability)
- 50% discount on museum faculty rentals
- Museum updates via email

---

## Upcoming Member Events

### Sun, Dec 4-Sat, Dec 10 Member Week

Enjoy double discounts in the Museum Store, member-only special events and the opportunity to purchase a gift membership for the art lover in your life.

### Thur, Dec 8 Member Dinner

Save the date! Figge members are invited to celebrate the holidays with friends, fun and food at the Figge! Not a member? Join today!





# Book your next event with us!

Visit [www.figgeatmuseum.org](http://www.figgeatmuseum.org)  
or contact Tracy at  
563.345.6657 today!

Photos by Sarah DeMaranville





# Museum Store



**Infinity Scarf** \$14.95 *Assorted colors*

**Men's Frank Lloyd Wright Socks** \$17.95 *Assorted designs*

**Nordic Braid Pendant** \$25.95 *Handmade in the U.S.A.*

**Mitten & Sweater Ornaments** \$6.95 *Handmade in the U.S.A.*

**Mitten Pins** \$12.95 *Handmade in the U.S.A.*

The Museum Store has free gift wrap all year round and no sales tax. All sales support the Figge.





**FIGGE**  
ART MUSEUM

225 West Second Street  
Davenport, IA 52801-1804

Nonprofit Org.  
U.S. Postage  
PAID  
Permit No. 243  
Rock Island, IL



**MARISOL KOSS**  
Bilateral Carpal Tunnel Surgery

**ORA**  
ORTHOPEDICS  
[qcora.com](http://qcora.com)

**AT ORA ORTHOPEDICS, WE PRACTICE  
THE ART OF RESTORING MOVEMENT.  
GET BACK TO WHAT TRULY MOVES YOU.**